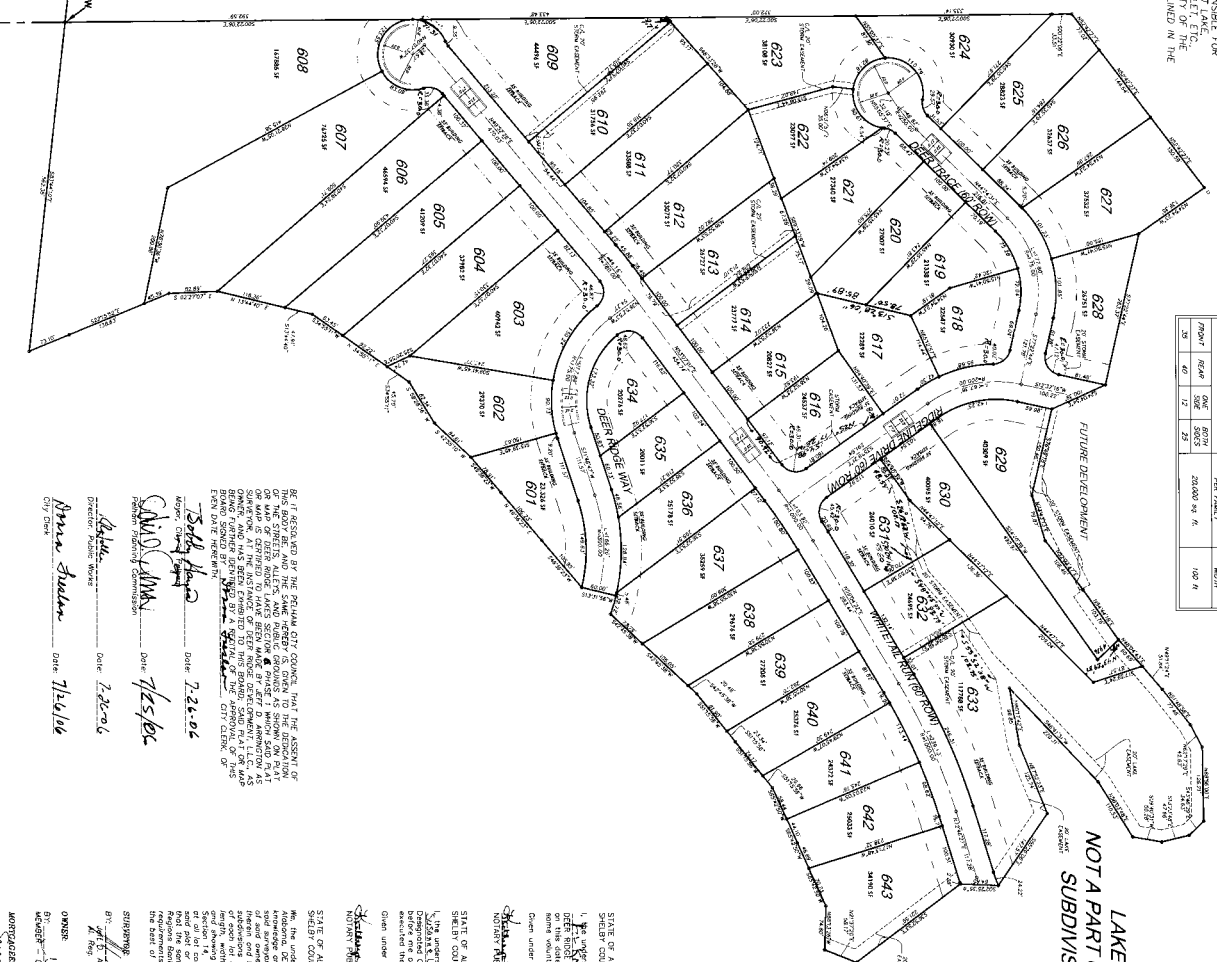


THE CITY OF FELHAM IS NOT RESPONSIBLE FOR THE MAINTENANCE OF THE ADJACENT LAKE, AND DOES NOT GUARANTEE THE ACCURACY OF THE HOMEOWNER'S ASSOCIATION AS OBTAINED IN THE PROTECTIVE COVENANTS.

SECTION	RANGE	COUNTY	STATE
20	40	17	25
NUMBER OF LOTS: 423 NUMBER OF LOTS: 100			



LAKE
NOT A PART OF THIS
SUBDIVISION

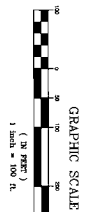
LAKE
NOT A PART OF THIS
SUBDIVISION

FUTURE DEVELOPMENT

THE PURPOSE OF THIS PLAT IS TO SUBDIVIDE 40.70 ACRES INTO 43 SINGLE FAMILY RESIDENTIAL LOTS.

**DEER RIDGE LAKES
SECTOR 6 PHASE 1**

SITUATED IN THE SOUTHWEST 1/4 OF THE NORTHWEST 1/4 OF THE SOUTHWEST 1/4 OF THE NORTHWEST 1/4 SECTION 14, TOWNSHIP 20 SOUTH, RANGE 2 WEST, SHELBY COUNTY, ALABAMA.



OWNER: DEER RIDGE DEVELOPMENT, LLC
 1000 W. ALABAMA AVENUE
 BIRMINGHAM, AL 35202-1000
 PH: 205-970-0347

STATE OF ALABAMA
 SHELBY COUNTY
 I, the undersigned, being a duly qualified and sworn public notary public, do hereby certify that the foregoing plat, together with the accompanying exhibits, has been duly filed for record in my office, and that the same are a true and correct copy of the original as shown to me by the person presenting the same for record, and that the same are a true and correct copy of the original as shown to me by the person presenting the same for record, and that the same are a true and correct copy of the original as shown to me by the person presenting the same for record.

Given under my hand and seal this 13th day of July, 2016.

[Signature]
 NOTARY PUBLIC
 STATE OF ALABAMA

STATE OF ALABAMA
 SHELBY COUNTY
 I, the undersigned, being a duly qualified and sworn public notary public, do hereby certify that the foregoing plat, together with the accompanying exhibits, has been duly filed for record in my office, and that the same are a true and correct copy of the original as shown to me by the person presenting the same for record, and that the same are a true and correct copy of the original as shown to me by the person presenting the same for record, and that the same are a true and correct copy of the original as shown to me by the person presenting the same for record.

Given under my hand and seal this 15th day of July, 2016.

[Signature]
 NOTARY PUBLIC
 STATE OF ALABAMA

STATE OF ALABAMA
 SHELBY COUNTY
 I, the undersigned, being a duly qualified and sworn public notary public, do hereby certify that the foregoing plat, together with the accompanying exhibits, has been duly filed for record in my office, and that the same are a true and correct copy of the original as shown to me by the person presenting the same for record, and that the same are a true and correct copy of the original as shown to me by the person presenting the same for record, and that the same are a true and correct copy of the original as shown to me by the person presenting the same for record.

Given under my hand and seal this 15th day of July, 2016.

[Signature]
 NOTARY PUBLIC
 STATE OF ALABAMA

STATE OF ALABAMA
 SHELBY COUNTY
 I, the undersigned, being a duly qualified and sworn public notary public, do hereby certify that the foregoing plat, together with the accompanying exhibits, has been duly filed for record in my office, and that the same are a true and correct copy of the original as shown to me by the person presenting the same for record, and that the same are a true and correct copy of the original as shown to me by the person presenting the same for record, and that the same are a true and correct copy of the original as shown to me by the person presenting the same for record.

Given under my hand and seal this 15th day of July, 2016.

[Signature]
 NOTARY PUBLIC
 STATE OF ALABAMA

ARRINGTON ENGINEERING
 CIVIL ENGINEERS - SURVEYORS - LAND PLANNERS

